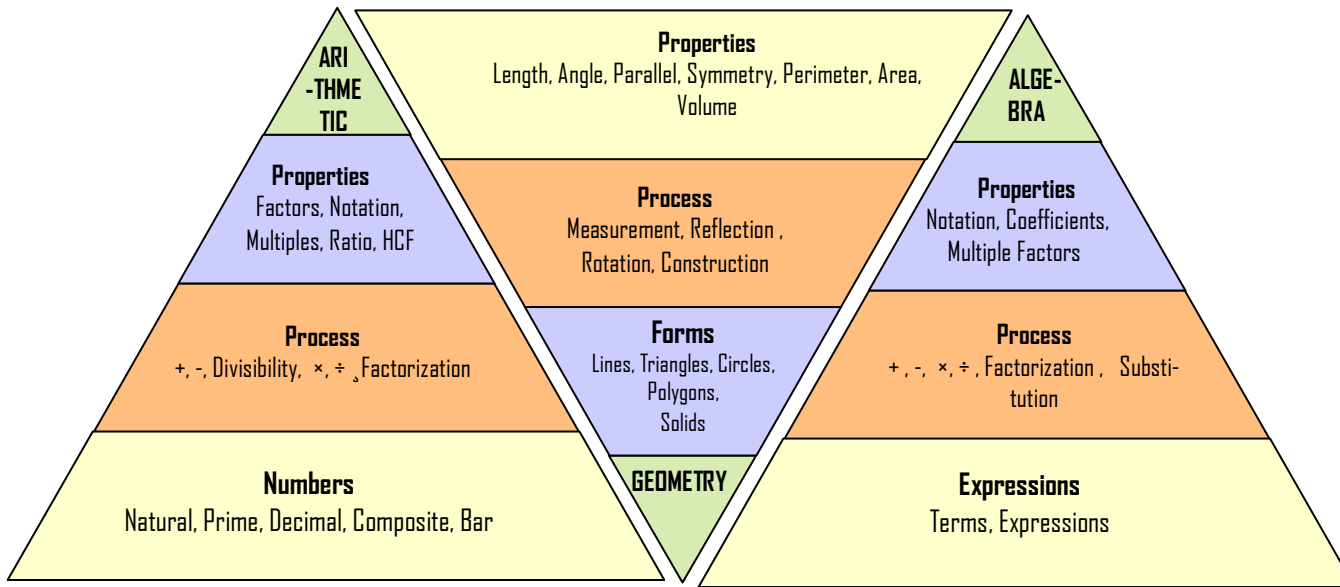


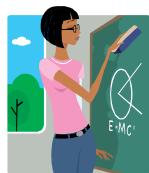
PROGRAM CURRICULUM DETAILS

Personalized Self-Paced Program



ARITHMETIC

Digit Sum Check & Nine Point Circle
 Complement or Vinculum
 All from 9 and last by 10 Method
 Arithmetic of bar numbers
 Addition and Subtraction in same operation
 Multiplication
 Tables the fast way
 Near the base (Nikhilam)
 Vertical/Crosswise
 Division
 Divisibility
 Flag-number and Nikhilam Methods
 Transpose & Apply Method
 Vedic Square
 Fractions, Decimals & Percentages
 Squaring & Square Roots



Higher and Fractional Powers

ALGEBRA

Multiplication & Squaring
 Equations & Equation
 Forming
 Charts, Simultaneous
 Equations

GEOMETRY

Lines & Shapes (2D & 3D)
 Measurement
 (Circumference, Area &
 Volume) & Construction
 Symmetry & Rangoli
 patterns
 Transformations
 Bearings

HIGHER MATH

Probability
 Sequences

ENRICHMENT PROGRAM

Personalized & Self-Paced
 Monthly Fee \$99*
 * Plus One Time \$25 Registration Fee

ATLANTA CENTERS

📍 Suwanee, GA
 📍 Alpharetta, GA
 ☑️ TEL: (678) 460-MATH

☑️ Weekday & Weekend hours—Call

☑️ E-Mail: VMA.Atlanta@gmail.com

REGISTER ON WEB
www.vedicmath.com

ADDITIONAL CENTERS

Chicago & Detroit

Math Enrichment Program* (Ages 7+)

➤➤➤ Self-Paced Program



Boosting Math Education for Success

TWO VMA CENTERS OF ATLANTA#

4411 Suwanee Dam Rd. Ste 750

Suwanee GA 30024

142 Prospect Pl, Alpharetta, GA 30005

TEL: (678) 460-MATH (6284)

VMA.ATLANTA@GMAIL.COM

WWW.VEDICMATH.COM

Operated by Shri Matic LLC for Vedic Math Academy Inc., Solon, OH

What is Vedic Math?

Modern day education requires basic mathematics for success, be it in business, science, medical, or engineering fields. From India, the land that invented *Zero* and *Infinity*, comes Vedic Mathematics. Discovered and reformulated by a brilliant scholar in the twentieth century, the following characteristics:

- ✧ Easy and simple methods
- ✧ Founded on basic principles
- ✧ Emphasizes *Mental Calculations*
- ✧ Natural flow from Arithmetic to Algebra & Geometry
- ✧ Multiple techniques for same operations



Vedic Math curriculum, as a complement to conventional math curriculum, has been used in schools in Britain for over 25 years and is also being taught in Singapore and Australia. Students preparing for highly competitive examinations in India (IIT-JEE, IIM-CAT, etc.), train using Vedic Math.

Vedic Math Academy (VMA)

Vedic Math Academy, under the leadership of Professor Sree N. Sreenath of Case Western Reserve University, Cleveland, Ohio has developed a curriculum to train students to reach their full potential in the art of mathematics. A primary goal is to instill in children a lifelong love of Math and boost them to excel in the PSAT/SAT/ACT.

Program Details

- ☞ Children age 7+
- ☞ Supplements School Math Teaching
- ☞ Foundational Skills for PSAT/SAT/ACT, and higher-level math
- ☞ Empowers students – develops both sides of formative brain
- ☞ Develops clarity of mind and intuition

ENRICHMENT PROGRAM

Personalized & Self-Paced Program

Monthly Fee **\$99***

* Plus One time \$25 Registration Fee

ATLANTA (SUWANEE/ALPHARETTA) CENTER HOURS

Weekday & Weekend hours—Call

REGISTER ON WEB

☑ WWW.VEDICMATH.COM

ADDITIONAL INFORMATION

E-Mail: VMA.Atlanta@gmail.com

Phone: (678) 460-MATH (6284)



SEVEN STEPS TO MATH SUCCESS

1. VISIT VMA CENTER ONCE OR TWICE* A WEEK FOR 45 MINUTES

Students get individually paced instruction for their ability and potential. Students complete skill sets at their own pace with specially formulated worksheet material for their level. This provides quality instruction and study time at the center.

* for questions or clarifications.

2. STUDENTS SELF CORRECT UNDER INSTRUCTOR'S GUIDANCE

Instructors provide worksheets, and, work with the students to correct mistakes. Students are involved in correcting exercises, giving them the ability to limit repetitive mistakes. Accuracy and speed are emphasized.

3. COLLECT NEXT HOMEWORK ASSIGNMENT AND IT'S TIME TO GO

Regular practice is a must. Students collect Vedic Math worksheet materials to complete at home before the next center class. Daily concentrated practice of at least 20 minutes is needed to develop good study habits. Parents grade homework for immediate feedback on mistakes. Answer key is provided.

4. DOCUMENTATION SHEET

The students' everyday performance is recorded on the Documentation Sheet, noting work speed/accuracy. Instructor records progress periodically. Extra help for difficult material is available between classes.

5. MOVING TO NEXT LEVEL

The instructor carefully reviews the Documentation Sheet to check for accuracy and speed to determine whether a student has internalized a topic. Upon this evaluation, the instructor will promote the student to the next level by teaching them the new topic.

6. TESTS

Periodic tests at each level is given to ensure learning.

7. CERTIFICATE

Completion Certificates awarded to successful students.

